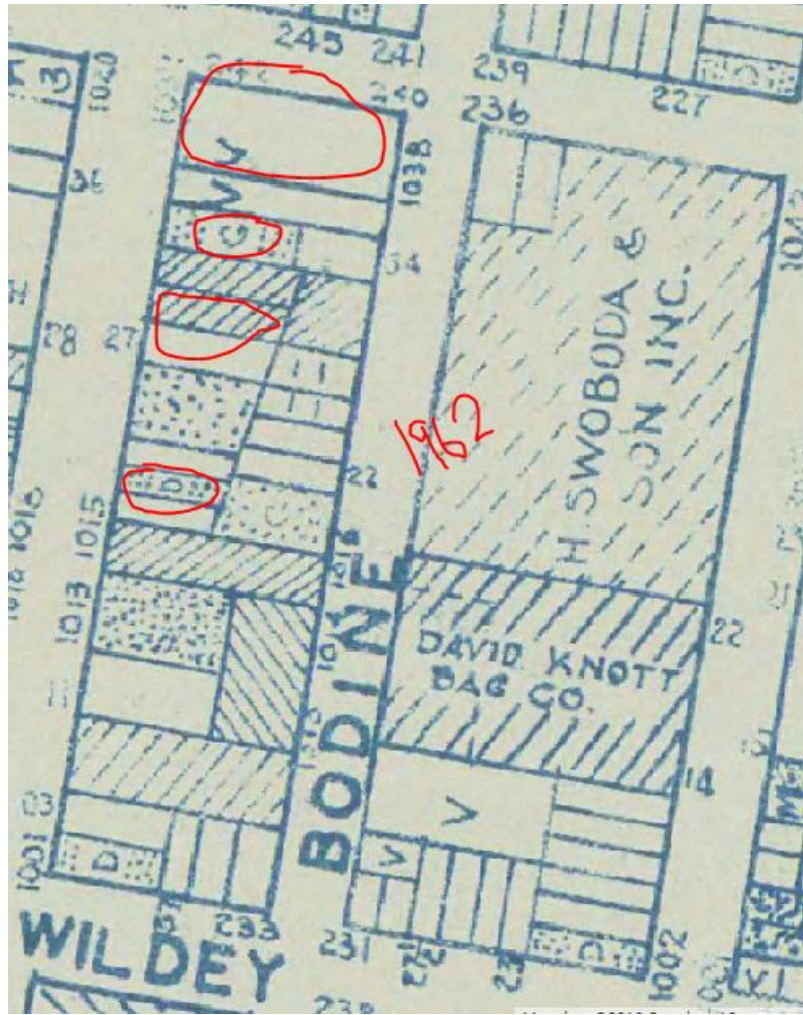


**List of Brownfields in Philadelphia with their Historical Land Uses**

<b><u>Brownfield Address</u></b>	<b><u>Historical Land Use</u></b>
1156 North 3rd Street, Philadelphia	In 1942/62 this site was labeled as a garage with curb discharge gasoline service.
1201 S. 35th St., Philadelphia	In 1910 it was an Iron foundry as well as a RR passing through so lots of unloading of industrial materials. In 1942 there was still the railroad that went through with a vacant lot and building material (commercial use).
1213-41 N. 5th Street Philadelphia	Closer to 1204 N Lawrence St and 1200 N Orkney St. the 1942, and 62 maps simply show it as industrial land. It is a big plot of land that is just dirt right now
1226 N 52nd Street Philadelphia	It is currently a vacant grass field lot, but in 1942 and 1962 it was residential housing so this may be due to the lack of brownfield laws back then. There may have been a contamination that happened withing the house or during demolition.
133 Grape St. - Hanson Associates Philadelphia	In 1910 it was a brick stable/shed, and then by 1942 it was a 'club'. There may have been contamination that occurred within the house or during demolition.
139-167 Clearfield Street Philadelphia	In 1942 and 62 it was a Garage- Gasoline service drive in with 67 spots. And right next to it was a Garage- Gasoline service: curb discharge
1425 North American Street Philadelphia	In 1942 it is labeled as a coal yard right next to a rail line, and then in 1962 it is labeled as industrial use.
1445-1447 N. American St. Philadelphia	In 1942 it is labeled as a vacant lot right next to a rail line, and then in 1962 it is labeled as industrial use
1019-27, 1029-31, 1033-35, and 1037-39 N. 3rd Street Philadelphia	These lots have never been specifically used as a factory but the surrounding blocks have. In 1875 there was a clove factory. There was also a veal factory, tannery, and marble yard next/ across the street. This means that there may have been spillage from these locations, and well they may have used these addresses as a dumping place. In 1962 1019-27 was it a commercial single use dwelling, 1029-31 was an industrial lot (it does not specify for what), 1033-35 was a Garage- no gasoline service (but there still may have been car spillages and such), and 1037-39 was also vacant lot possibly used for dumping. All of these locations probably

have been affected by the industry surrounding them.

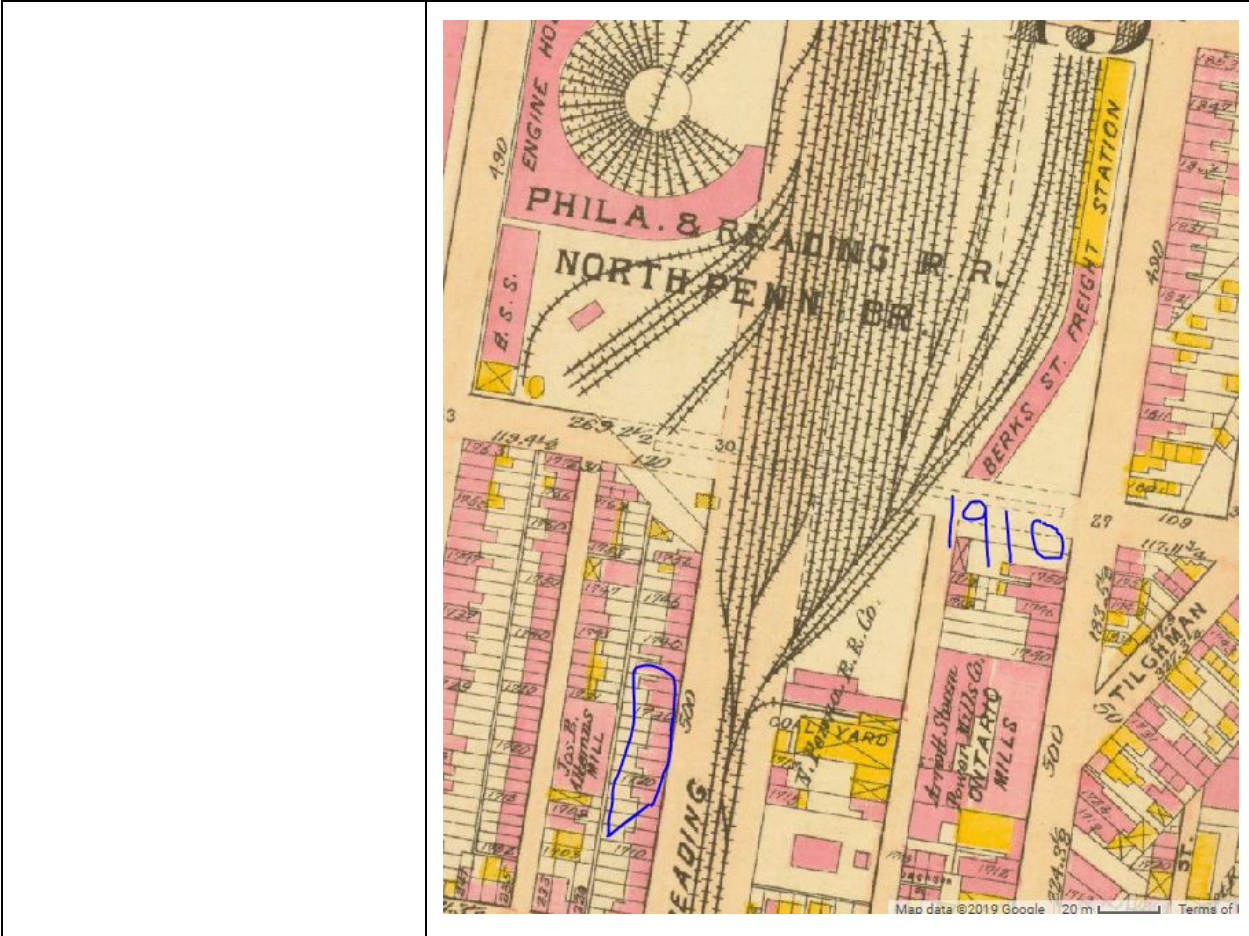


<p>1401-25 N. 5th Street Philadelphia</p>	<p>In 1962 it was a Drueding Bros. Co Leather Products location. Leather production uses a lot of chemical toxins</p>
<p>1500-06 N. 5th Street Philadelphia</p>	<p>This location was a commercial use single use dwelling, but right across the street was a hauling contractor location, which is basically simply a junkyard, which it still is. There may be some spillage from the junkyard into this location. 1500 5th street is now a sheet metal production site</p>
<p>1501 N. Broad Street Philadelphia</p>	<p>In 1962 it was a Gasoline service drive in. Now it is a citizen bank</p>
<p>1501-13 N. 2nd Street Philadelphia</p>	<p>In 1962 it was labeled as an industrial zone, and in 1910 it was a wooden stable but currently it looks like apartments</p>
<p>1519-31 Natrona Street Philadelphia</p>	<p>In 1910 it was a horse stable, and in 1962 it was a garage with gasoline service drive in. All of this is right along the railroad which also means surrounding areas were also industrial use. It is still along the rail line and may be the</p>

	original building with houses around it.
1521-1539 Parrish Street Philadelphia	In 1962 these properties were a garage with gasoline service with curb discharge, a junk shop, and a lot used for industrial use. Now it looks as though they are keeping the structures but simply changing the use.
1522 N. American Street (Bahdeebahdu) Philadelphia	In 1962 it was an iron production place right next to an iron junkyard and garage. Now it is an art gallery/event space.
1616-46 Bodine Philadelphia	In 1962 the actual location was a vacant lot, which may have been used for dumping. Also right across the street was a photography and printers cardboard factory owned by A.M. Collins. It was right along the railroad road. It is also right next to 1522 N. American Street (the location above). It is currently still a vacant lot with trees.
1620-24/ 1630-50 N. 5th Street Philadelphia	In 1942 it was a Ship Manufacturing. Co Lumber and then in 1962 it was a motor freight station meaning it has changed its use, but has been industrially used for a while. Now it is a boulder lounge
1627-35 N. 2nd Street Philadelphia	In 1962 it was an upholstered fur manufacturing company, which probably had some toxic chemicals involved. Now it is a radio studio
1700 W. Indiana Ave Philadelphia, 1724 Indiana Ave Philadelphia, 1901 W. Clearfield St. Philadelphia, 3021 N. 19th Philadelphia	In 1962 it was a drive in garage with gasoline service. Also all around it are industrial companies with the rail yard right next to it. It must have been contaminated because it is currently a vacant lot. A little further up there is another location (1901 W. Clearfield St. Philadelphia) that in 1962 was labeled as a vacant lot but was right next to a Sawdust Sales Co. all of these seem to be in the same area of a VERY heavily industrialized zone.

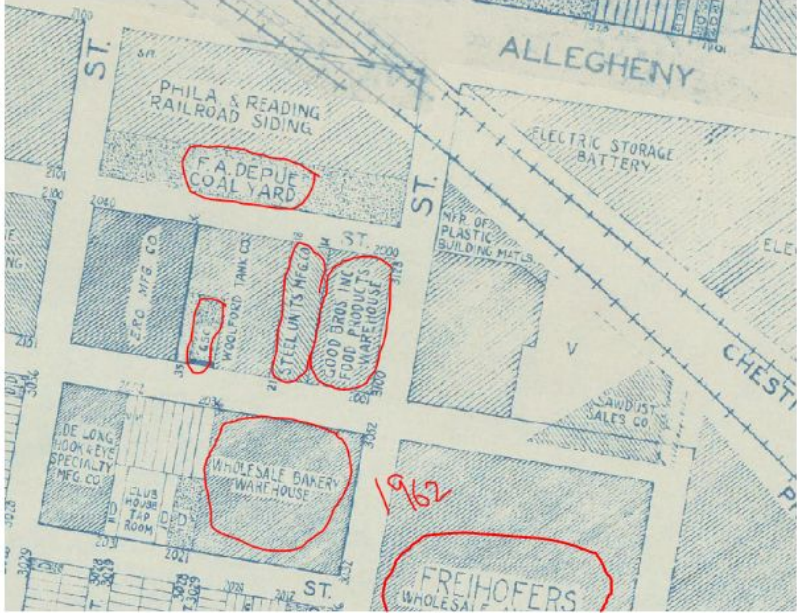
<p>1701-1715 Cayuga Philadelphia</p>	<p>In 1962 it was Holland Steam Laundry Company. Laundry involves a lot of chemicals. Now it is a heavily abandoned site where the building still stands without windows. It is also next to a few auto service sites.</p>
<p>1729 W. Allegheny Philadelphia</p>	<p>In 1962 it was a metal furniture company owned by bunting Glider. It is also along the railroad. It is currently a grassy vacant lot.</p>
<p>1737-69 N. Bodine Street Philadelphia, 301-309 W. Berks Street Philadelphia</p>	<p>It is labeled as a vacant lot but up until around 1910 there was a huge rail yard for the Phila &amp; Reading North Penn Br. this means it was probably being used by them. There was also about 20 tracks right next to it. Also on the other side of the rail lines there is a coal yard. By 1942 there weren't the tracks there but the company had many of the buildings located there. There are homes (301-309) just north of this image that are right next to the railroad, that probably received contamination from this huge rail yard as well</p>





<p>1825-41 North 5th Street Philadelphia</p>	<p>In 1962 this location was the McCaffrey File Co. and Metal and Howe manufacturing. It was also right next to chemical laboratories meaning there must have been a lot of contamination. Currently the land is vacant, but is surrounded by residential homes and a grocery store.</p>
<p>1844/6 West Sedgley Philadelphia</p>	<p>It has been pumping engine company from at least 1895-1962 right along the railroad as well as next to a Pipe manufacturing Co. so pretty heavily industrial. Currently it still seems to serve an industrial purpose.</p>
<p>1914 to 1948 W. Cayuga St Philadelphia</p>	<p>All these locations seemed like normal residential places until 1962 when the roosevelt exp was drawn on the map even though it was built it seems like it was connected to 76 in 1961 so thats why its on no previous maps. It displaced a bunch of residents. The labeling of the brownfield could come from the dismantling of the railroad or construction of the expressway.</p>

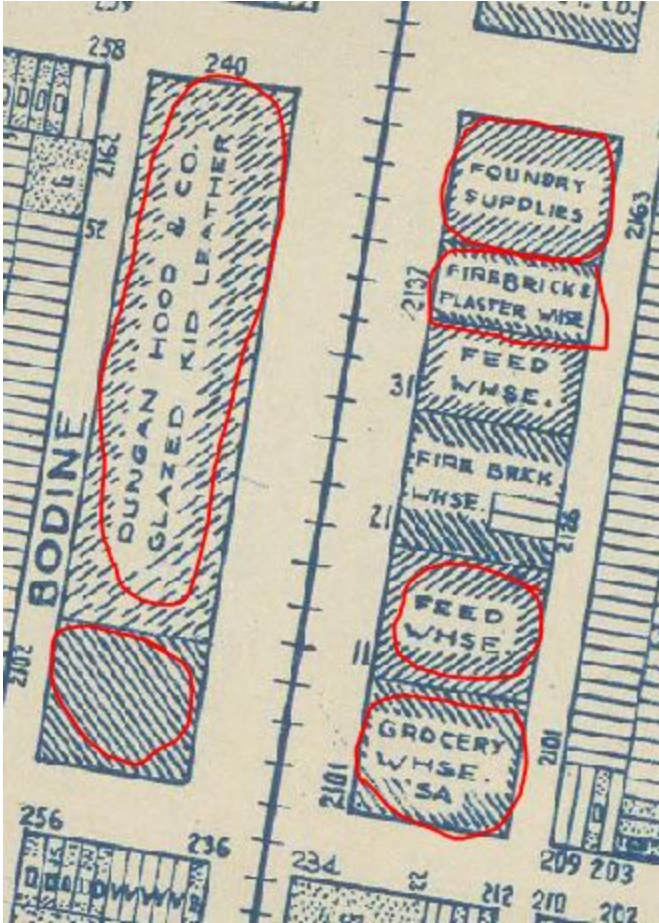


<p>1925 W. Allegheny Avenue Philadelphia</p>	<p>In 1962 it was a garage, no gasoline but still a garage auto shop and it is located right along the railroad.</p>
<p>2001-03 N. American St. Philadelphia</p>	<p>In 1962 it was an industrial use junk auto site and in 1942 it was an Armour, all the while being next to a railroad</p>
<p>2001-03, 2010, 2026, 2031-35, W. Clearfield St. Philadelphia, 2016-34 W. Lippincott St. Philadelphia, 2015-19 W. Lippincott St. Philadelphia, 2034 W. Allegheny Ave Philadelphia, 3025 N. 19th Philadelphia</p>	<p>In 1962 it was Good Bro. Inc Food Production Warehouse (2001) and a Wholesale Bakery Warehouse (2010, 2026) (3025) right next to a Steal Units manufacturing Place (2016), there is also a garage with gasoline service at curb discharge (2031-35),and a coal yard (2015, 2034), which is all along the railroad. Now it's just an abandoned building next to a bunch of other abandoned buildings. This area looks heavily industrialized which explains why there's blocks of brownfields.</p> 

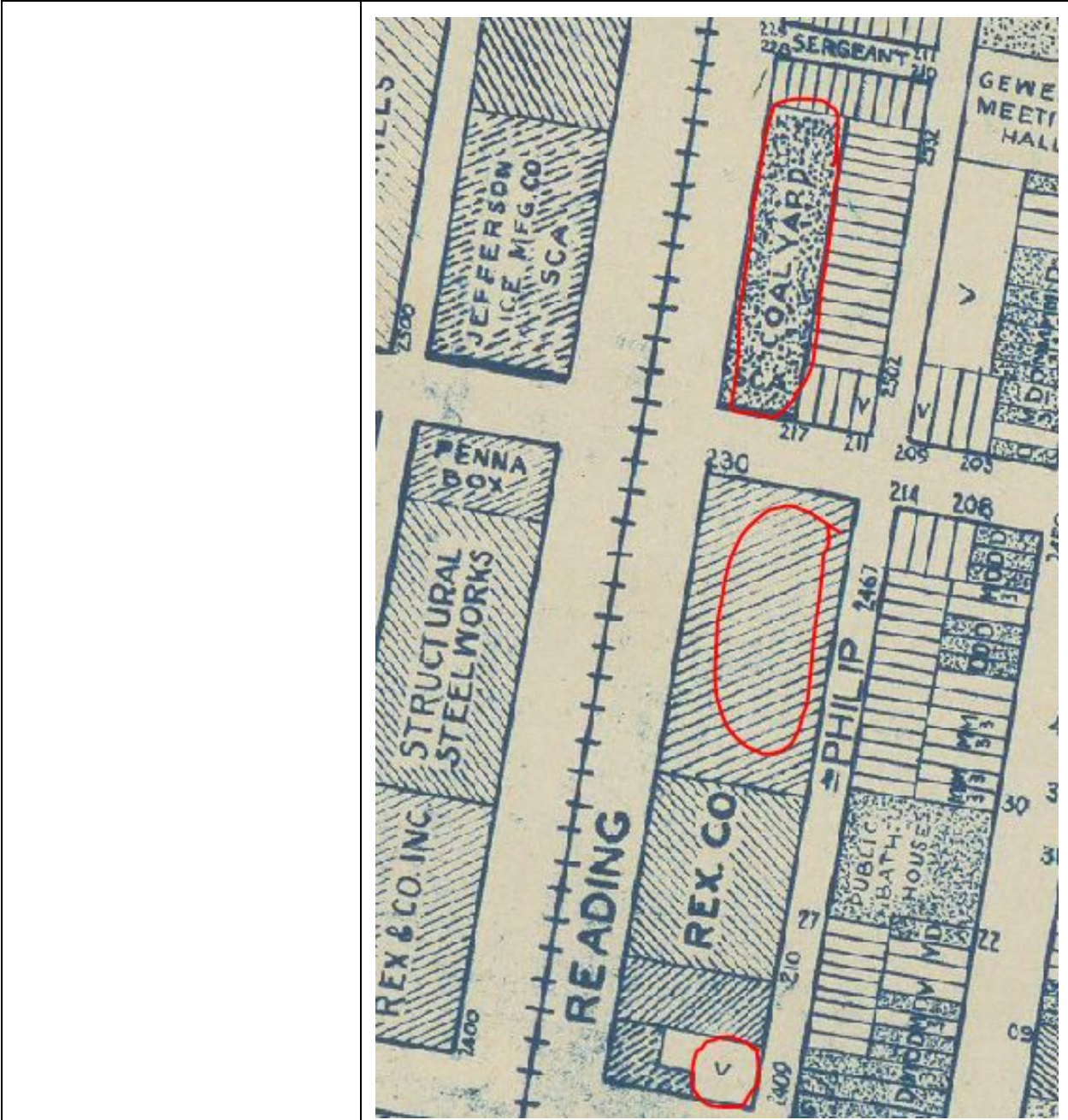
<p>2002-28 Cecil B. Moore Avenue Philadelphia</p>	<p>It has been since 1962 a commercial and dwelling use. This could simply mean there was a housing problem because there no industry even around it, it has been a residential area since at least 1895. It currently looks like a boarded up house so there may simply be an issue that happened within that specific location.</p>
---	---

<p>2052- 2064 North Philip Street Philadelphia</p>	<p>From 1870s to 1910 there were multiple railroad tracks right next to it, the location though seems to have always been housing. It does have some surrounding lots that are industrial uses. It is currently surrounded by auto shops but looks like it's simply an overgrown vacant lot now.</p>
--	--




<p>2100 E. Rush Street Philadelphia</p>	<p>In 1942 it seems to be a dye works place meaning there must have been many chemicals involved.</p>
<p>2100, 2125 W. Allegheny Ave Philadelphia,</p>	<p>It used to be a bronze foundry right along the railroad and next to the other very heavily industrialized places. (2100)</p>
<p>2100-12 N. American St. Philadelphia, 2101-05 N. American Street, Philadelphia, 2107-09 N. American St. Philadelphia, 2114-2160 N. American Street Philadelphia, 2137-41 N. American St. Philadelphia, 2143 N. American Street G3tcny00 Philadelphia,</p>	<p>These locations are along the railroad and are all industrial zones at least until 1962.</p> 
<p>2111-15 E. Westmoreland Philadelphia, 3310-12 Collins St. Philadelphia</p>	<p>In 1962 this location was a sprinkler manufacturing plant (westmoreland) right next to a soap factory (Collins) so there are definitely a bunch of chemicals that have been used here.</p>
<p>2125 W. Allegheny Philadelphia</p>	<p>In 1962 this is labeled as a drive in gasoline service.</p>
<p>213-217 W. Cumberland Philadelphia</p>	<p>It seems to have been vacant since 1942 but it is adjacent to a large coal yard along the railroad so it may have always been seen as contaminated or used as empty field for the coal yard.</p>
<p>214-34 Diamond Street</p>	<p>In 1962 it was a garage with no gasoline service (but still</p>

Philadelphia	nevertheless a garage) right next to railroad.
220-250 W. Lippincott Philadelphia	In 1962 this was a gasoline service with curb discharge and accessory private use for industrial use.
2200 E. Trenton St. Philadelphia	This location has always been a dwelling (and still is) but it was located right next to the railroad, meaning something may have happened there causing it to be a brownfield
2201 E. Tioga Street Philadelphia	A steel factory (penn galvanizing co) that is right next to sandoz chemical works and the railroad.
2233-47 W. Allegheny Philadelphia	This is simply labeled as an industrial lot but it is surroned by other insudtriaontariol lots and the railroad.
2281 E. Ontario St. Philadelphia	In 1962 this was a drive in gasoline service meaning this means there may be leaching of the gas. Before that it was just a vacant lot
233 East Girard Avenue G3tbny00 Philadelphia	In 1875 this location has been a dwelling forever but was right next to a bleachery (which has a lot of chemical contamination) and then later it was a brick stable attached to a dwelling until 1942, at this point it was right ned to a cotton Mill, and since 1942 it has been a commercial dwelling right next to the melrose candy company. (I think the address is a little off and it's a company that is supposed to be the brownfield.
2346-54, 2356-64, 2366-68, 2400-08, 2401-28 W. Sedgley Ave Philadelphia	These locations are all industrial. One is a chemical company (2346-54) and other is asbestos and roofing company (2356-64) and then there is a gasoline service with curb access (2366-68, 2400-08). All of these are also located along the rail line.
2401-11, 2425-39, And 2501 N. American Street Philadelphia	This is a vacant lot surrounded by industrial lands along the reading railroad. This is the Rex Co, and a coal yard too

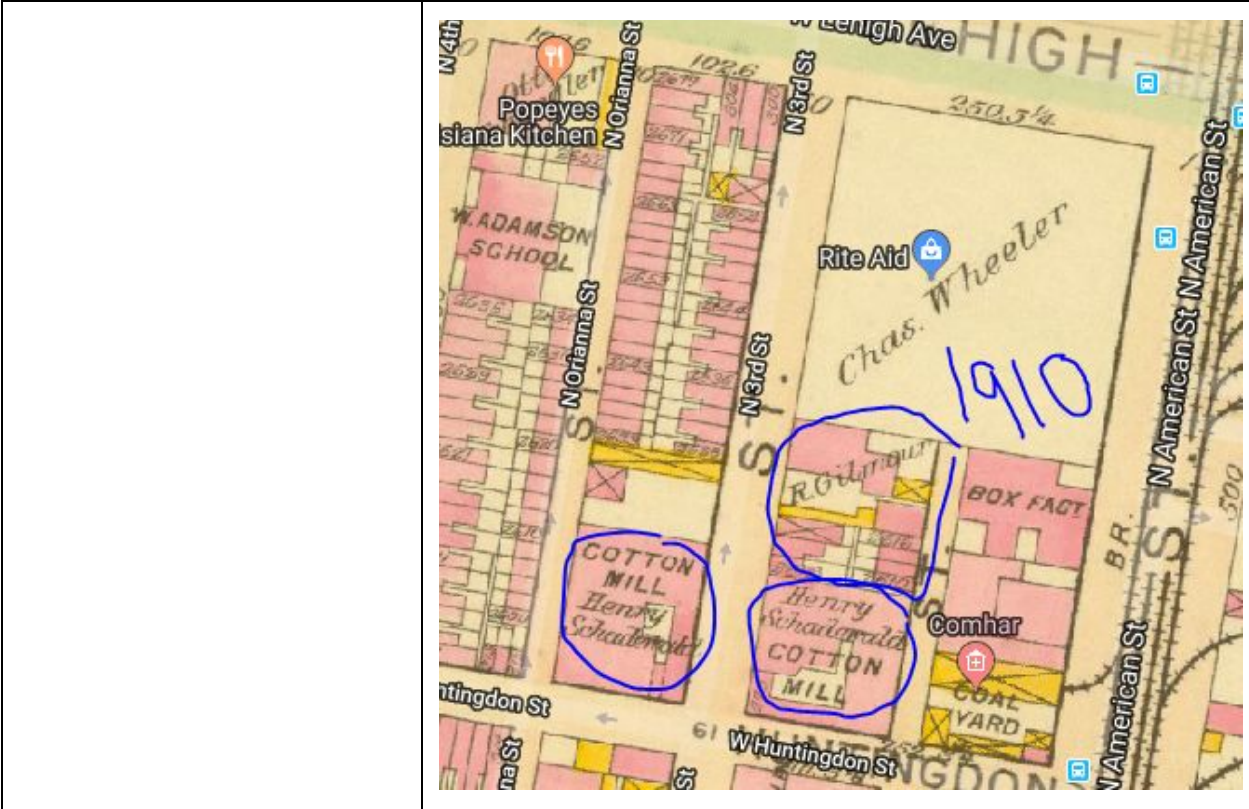


<p>2502-16 N. Philip Street Philadelphia</p>	<p>In 1962 this was a coal yard connected to a garage with gasoline service that has a drive in with private use accessory</p>
<p>2530 Suffolk Street Philadelphia</p>	<p>This is in southwest. The address on google maps says 8400-8435 suffolk place. These homes were built due to urban redevelopment in the area post war.</p>
<p>25th &amp; Tasker Garden Philadelphia</p>	<p>This has been an intersection with a railroad going through it since at least 1895. Currently it is a road with an elevated railroad above it.</p>



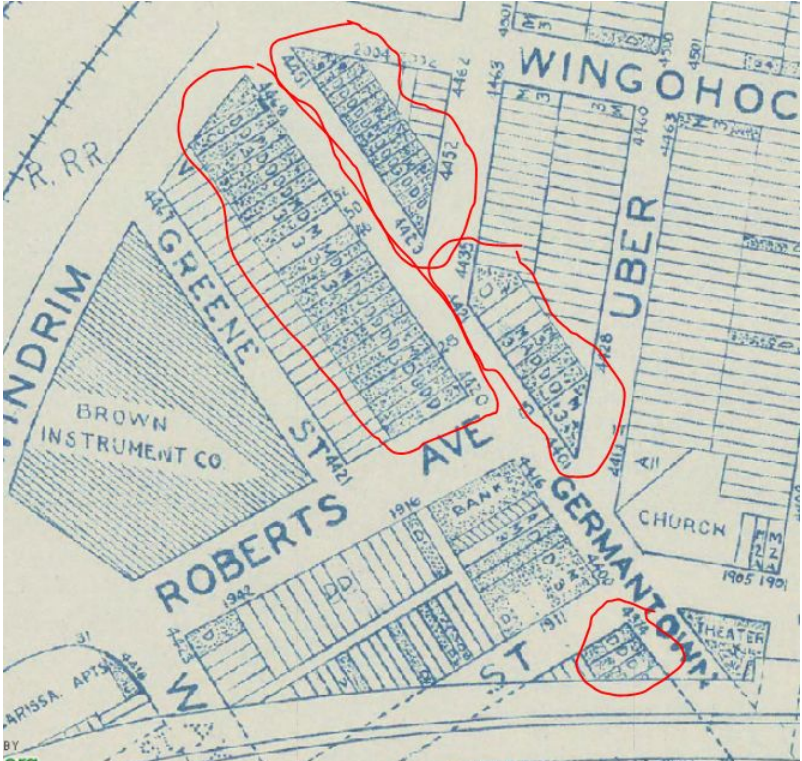
<p>2600-26 N. 3rd Street Philadelphia</p>	<p>In 1895 this was a dye factory, then in 1910 it was a cotton mill, in 1942 it was labeled simply as industrial, and then by 1962 it was labeled as “truck terminal” this shows a long history of using this land as an industrial site. It currently seems to just be an empty lot or a parking lot.</p>
<p>2601-13 N. 3rd Street Philadelphia</p>	<p>In 1942 and 1962 this land was labeled as industrial. Previously in 1910 it was a cotton mill, it is also currently a parking lot.</p>
<p>2615-21 N. 3rd Street Philadelphia</p>	<p>In 1895 and 1910 is was a brick stable/shed. Then by 1942 and 1962 it was labeled as industrial. It is currently a large junkyard. Here is a map of the 3 addresses listed above:</p> 

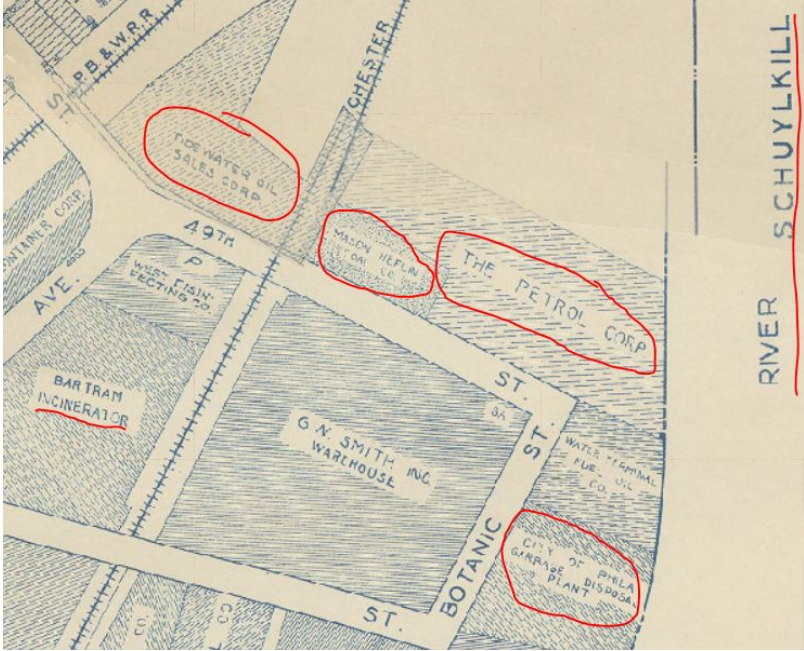




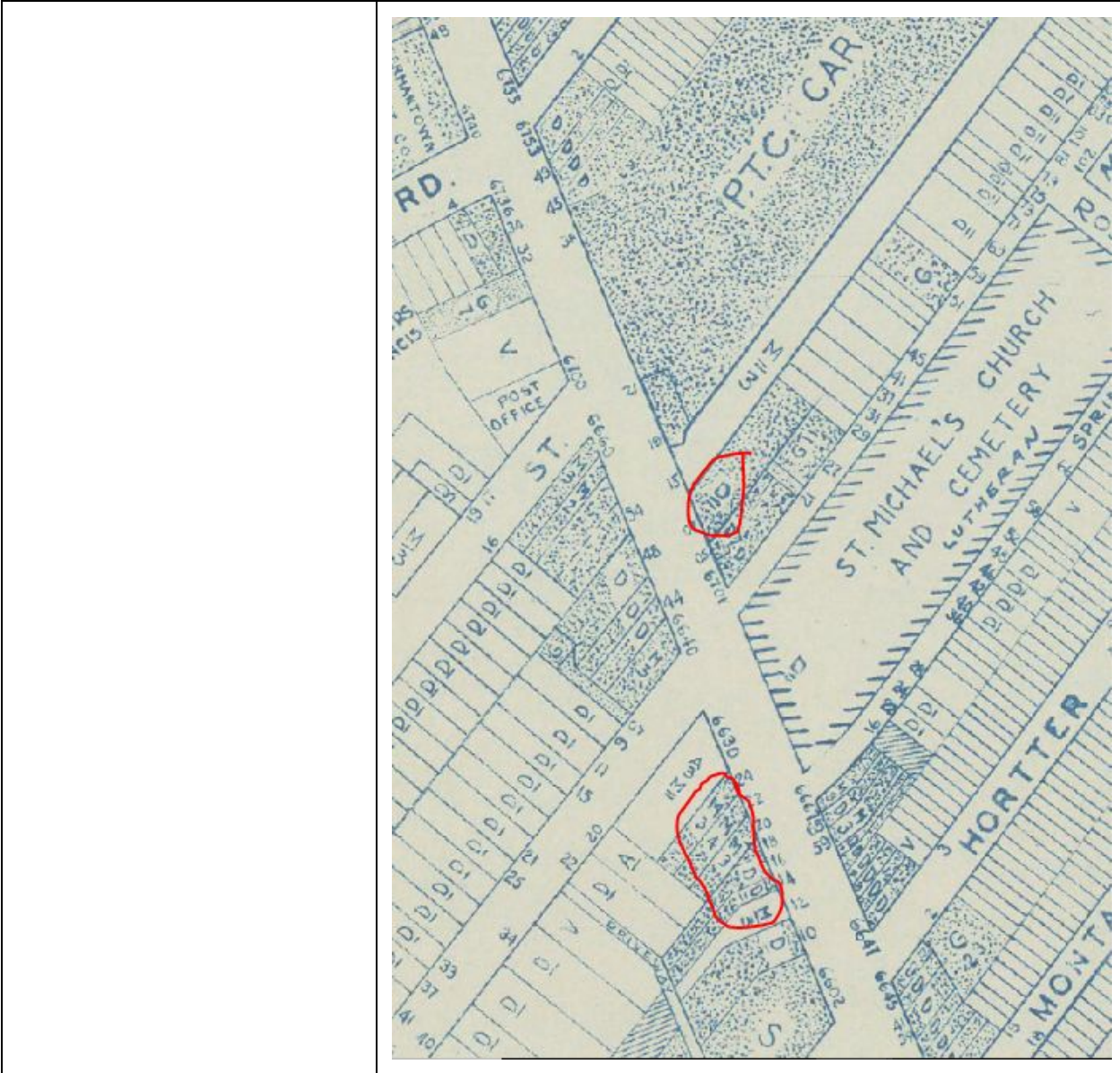
<p>2761-75 Palethorp Street Philadelphia</p>	<p>In 1895 it was Somerset mills, then in 1910 it was a machine shop, then in 1942 to at least 1962 it became a garage with gasoline service at curb discharge. And no it is an empty lot right next to Leatex chemical company.</p>
<p>2846-2848 N. 17th Street Philadelphia</p>	<p>In 1962 and 1942 this location was an industrial site as well as an automobile junkyard. Before that is was a machine shop in 1910. It is currently a large meal distribution center.</p>
<p>3001-3145 N. 18th/19th Philadelphia</p>	<p>In 1962 this location was an industrial materials co, before that in 1895 to 1942 it was a wholesale lumber yard. Currently it is a packaging plant.</p>
<p>3025 N. 18th Philadelphia</p>	<p>This location is currently owned by The Recycling Company. In 1895 it was a storage facility for the railyard as well as a coal yard in 1910. Then in 1942-1962 ti was owned by the victor coal and fuel company as well as the pittsburgh plate glass co.</p>
<p>3033 Glenwood Ave Philadelphia</p>	<p>In 1962/42 this location was owned by Judson C. Burns as a warehouse right along the railroad. Before that in 1910 it was owned by the railroad company and was a stone yard as well</p>
<p>3100 N. 19th Philadelphia</p>	<p>In 1962 and 1942 this was an electric storage battery facility right in the heart of the industrial sites in kensington. Then</p>

	before that it is simply labeled as a factory with many railroads going through it.
3100-3124 N. 5th Street Philadelphia	In 1962/42 this was labeled as an industrial site. Before that in 1910 it was a stone yard right along that railroad line. Now it is an empty lot.
3101-19 N. 21st Street Philadelphia	This is back with all the industrial lots in kensington. In 1962 it was an ero rowing machine manufacturing company, and before that in 1942 it was automotive sporting goods co.
3101-29 N. 20th Street Philadelphia	This location in 1962/42 was a sawdust sales company right along the railroad with the rest of the industrial lines
3111 E. Ontario St. Philadelphia	In 1962 this was an equipment storage place for BM Weiss contractors as well as a pumping station. This is also right along the railroad and the delaware river.
332-52 E Tioga St And 3300 C St Philadelphia	In 1962 this was the phila storage battery co, meaning there were electronics and metals that could have a lot of chemical and contamination. Also being next to the railroad maybe heavy machinery is held here.
3401 Collins St. Philadelphia	In 1962/42 the maps show this location is a copper and steel plant called "ACME cooperage and steel drum co". Before that in 1910 it was the PA RR Co, and 1895 it was the trenton RR co.
3410 Tulip St. Philadelphia	In 1962 this location was a garage with a gasoline service drive in previously it was a vacant lot. Now its a tattoo shop.
3574 Bath Street Philadelphia	This location was mainly a vacant lot, but it was probably a recent brownfield because the delaware exp was built right next to this area, and then around this area is surrounded by construction sites. Currently its a vacant lot with many dirt piles around it.
3809-19 Frankford Ave Philadelphia	This location was owned by hulton dyeing co, which means heavily chemicals were used and may have contaminated the area.
3831 Coral St. Philadelphia	This area has a lot of railroads along it. In the early 1900s there was a very large leather manufacturing co for goats. And then in 1942/62 its an english quality biscuit co, and childrens dress manufacturing co. now it's an abandoned warehouse.
4400 G Street Philadelphia	This location is currently a little park and a parking lot. But it

	used to be a gasoline service with a drive in.
4360-4470 Germantown Avenue Philadelphia	<p>These locations are currently homes but are right between the roosevelt exp (that was built by taking out houses and displacing people) and the rail line. This could just mean that due to the high level or traffic of cars and trains it may have caused contamination that is not recommended for people to live near. There are townhouses here though. There may have been a spill during construction. Also the locations are labeled as commercial and housing lots - meaning they may be garages or other sorts of business.</p> 
4415 Chestnut St. Philadelphia	This location used to be a garage with no gasoline service. Now its a gym.
4801 West Jefferson Philadelphia	This location used to be a huge yard for the PA RR, not its a smaller location with a bit of green space.
4851 Stenton Avenue Philadelphia	This location is labeled as industrial lot that has a candy factory in one side and and electrical instrument company.
4913-38 Parkside Avenue Philadelphia	This location has been labeled as industrial on the 1942 and 62 map. It is currently still and industrial/commercial site
4910 Botanic Ave	This location in 1962/42 is the garbage disposal plant of

<p>Philadelphia PA, 19124 Philadelphia County, 1601-3, 1627 SOUTH 49TH STREET</p>	<p>philadelphia. It is surrounded by other sanitation and industrial plants right along the schuylkill river. Currently it is still a disposal plant, but are trying much harder to be sustainable. This location also had a coal yard and a petrol corp and oil sales corp.</p> 
<p>49th Street Terminal Philadelphia</p>	<p>This location is probably had a spill or so with the railroad construction or during operation of the train.</p>
<p>6614, 6616, 6620, 6622, 6624, 6703 Germantown Ave Philadelphia</p>	<p>These locations are labeled as commercial use dwellings for single families, and multi family homes. This means they may be garages. For 6703 it is right across the street of a car barn (a place that housed trolleys)- now owned by septa. The other addresses were right next to a gasoline service station so there may be a spill that happened there.</p>

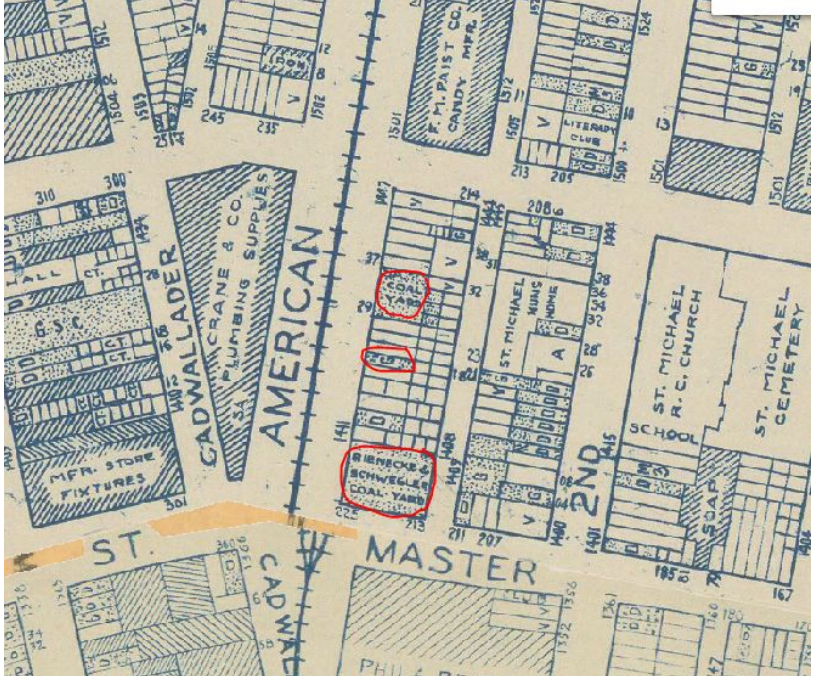




<p>700-704 N. Third Street Philadelphia</p>	<p>This location is a commercial and multi family site meaning there may have been a garage of sort here.</p>
<p>7105 Grays Avenue Philadelphia</p>	<p>This place is a commercial use and dwelling place that has a multi family attachment.</p>
<p>715 W. Chew St Philadelphia</p>	<p>This location in 1962/42 is a vacant lot touching the P&amp;R railroad tracks and siding.</p>

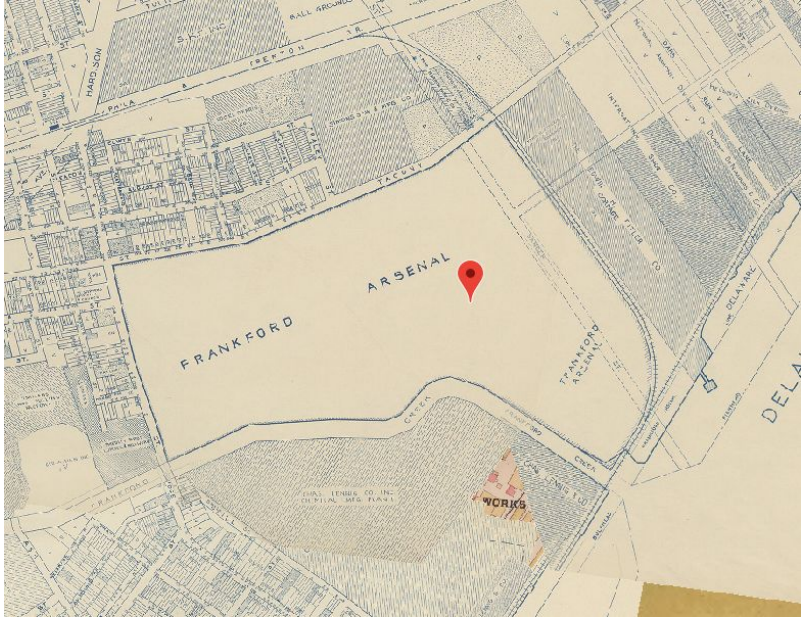
<p>801 W. Olney Philadelphia</p>	<p>In 1962 this location used to be a freight yard, right next to a coal yard.</p>
<p>835-87 N. 19th St</p>	<p>It had been as garage since 1910 but is currently a vacant lot</p>

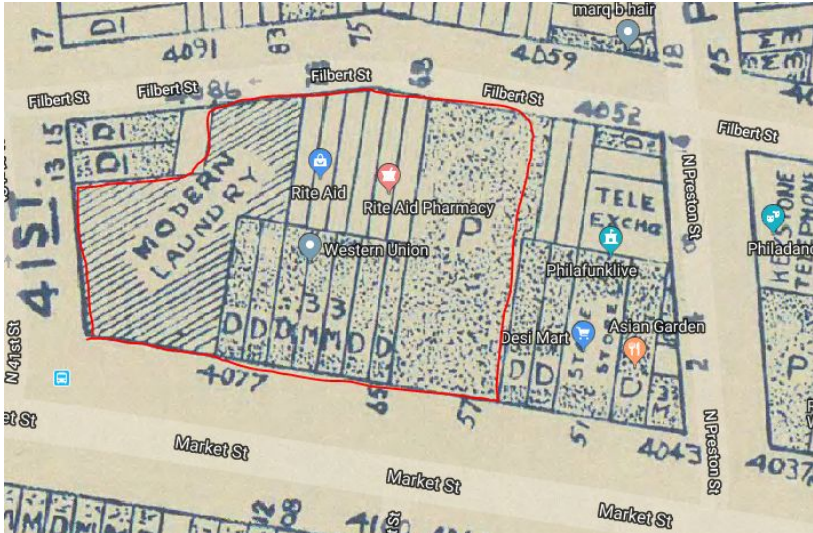
Philadelphia	
<a href="#">1825 Wylie Street Philadelphia</a>	In 1895 this was the keystone watch case factory, then by 1915 this became a kids shoe factory until it closed around the 70s. And now it is currently an empty lot.
8th & Diamond St. Playground Philadelphia	This is a location that had a drive in gasoline service here. It was right next to a playground that has now expanded to a blacktop area over it.
973-1003 N. 7th Street Philadelphia	This location a whole new large apartment building. In 1962 ti was a block that had a public bath house that may have chemical contamination from all the soap, there are also a few lots that have commercial and dwelling locations so this means that there me be a laundry or a garage site. This site may have also been labeled as a brownfield during demolition of the original buildings as well.
2519 - 37 GERMANTOWN AVENUE Philadelphia	In the 1895 map it says this location is the glenmore worsted co, which seems to be a <a href="#">yarn company</a> meaning there must have been dyes involved. Then in the 1910 map it shows up as a the Ritter bros. Chair factory which then expanded to become the WMB Ritter furniture factory in 1942 to then being only a lampshade factory in 1962. Now it's the Alma conway home care facility, but it seems to be trying to lease the space out- which may be the reason its popping up as a brownfield site.
2701 E TIOGA ST	In 1962 it was right along the railroad and was the nor-american melting co, right next to the alden rubber fabric co. This simply means A LOT of chemicals
214-34 DIAMOND STREET, Philadelphia	In 1962/42 this location had an auto gargae on its property. It is currently an empty lot.
915 WEST BERKS	In 1895 this location wafs a coal yard, and later in 1910 the coal yard was still present but with a railroad going through it as well, and finally in 1942/62 it went back to only being a coal yard, along the reading railroad
5143, 5145,5147 WARREN STREET Philadelphia	This location is right next to a convent and and industrial zone. This means there may have been an issue of the industrial zones. The industrial zone was a research and wax production company. Currently the location is an abandoned building with two empty lots next to it
2634-44 MASTER STREET Philadelphia	This location/block before 1910 was a public bath place and the spring garden reservoir was right next to it. Then on the

	<p>1942/62 map it became the bureau of highway office buildings (which is what the department of transport was originally called). This site may be a brownfield due to the bath house or due to a spill or demolition of the building. Is it currently the site of a public garden.</p>
<p>1401-1405 W. OXFORD STREET Philadelphia</p>	<p>This location is a commercial use and multi family dwelling location.</p>
<p>1636-38 CHURCH LN Philadelphia</p>	<p>This location was commercial and single family dwelling location. It may have been a laundry place or garage with a house attached that contaminated the land.</p>
<p>1414-16 NORTH PHILIP STREET Philadelphia</p>	<p>This location is currently a junkyard that may be seen as a brownfield now. There used to be single family dwellings here and there are still some on this street, so there may have been an issue with the actual house or in the demolition process that caused it to be a brownfield</p>
<p>1417, 1419, 1421,1423 NORTH AMERICAN STREET PHILADELPHIA</p>	<p>These locations are coal yard and garage services all along the railroad.</p> 
<p>1700-34 N. AMERICAN ST. PHILADELPHIA</p>	<p>It has been a dwelling for most of hisotry but it is right next to a railroad so this may also have an affect on the location</p>
<p>4130 CARBON STREET/ 4085 RICHMOND STREET Philadelphia</p>	<p>This area is right along frankford creek. In the 1942 and 62 map the creek was diverted to make room for the northeast sewage treatment works, which means there may have been</p>

	some dumping occurred there. Now this site is a junkyard with the treatment plant still next to it. There is probably a mixture of contamination from this.
3243 N. 3RD STREET PHILADELPHIA	This location was a foundry for most of history. Until at least 1910 it was the Bernstein manufacturing Co. and then later by 1942 it became the Fairmount Foundry. Currently it is simply an empty lot.
3401 GRAYS FERRY AVENUE Philadelphia	This location is a very large lot. It is the DuPont Manufacturing Co for paints and varnish, which created a lot of hazardous waste and contamination with all the chemicals involved in the paint and varnish making process.
310-318 S. 48TH STREET PHILADELPHIA	This location is only labeled as a commercial use site. It does not specify for what but we can assume the commercial use of it has contaminated the land.
6-24 SOUTH FARRAGUT STREET, 4606 MARKET STREET PHILADELPHIA	This location has some commercial and single family homes dwellings so the commercial use of the lots may have had some contamination. There may have also been some issue with the demolition of these homes. This lot is currently empty but right next to the train station meaning maybe there could be contamination during the construction of the railroad.
4700-06 MARKET STREET PHILADELPHIA	This location was a city garage warehouse and a service gas station with curb discharge
4400 G STREET PHILADELPHIA	This location was a drive in gasoline service station.
1750-56 NORTH FRONT STREET PHILADELPHIA	This location is shown on the 1942 and 1962 map as a barrel manufacturing and motor freight company.
1512 - 20 E. WINGOHOCKING ST. PHILADELPHIA	This location was an office and storage yard owned by Frank and Mark Contracting Company
4541 AND 4547 TACKAWANNA STREET PHILADELPHIA	This location is labeled as the SS White Manufacturing Dental Supplies. This can create a lot of hazardous waste
2275 Bridge St, Philadelphia, PA 19137	This used to be the Frankford Arsenal, which has a lot of metal melting and other chemicals involved with this. Around it is also heavily industrialized this is on the 1962 map



	
<p>468 DOMINO LANE PHILADELPHIA</p>	<p>This area is labeled as a vacant lot but it is a vacant lot along a heavy industry area, so it can be safe to assume that this was probably a dumping site for one of the industries.</p>
<p>1801-07 N. 19TH STREET 1817 W. MONTGOMERY AVE. PHILADELPHIA</p>	<p>This location seems to have been a laundry place for a while. In 1962/42 it was called “victory cleaners and axo drivers” before that in 1910 it was called excelsior laundry” and before that in 1895 it was called “barnes-erb laundry”. Currently it is an empty lot with cans and junk in it. The lot next to it is also labeled as industrial use and may have been used by the laundry services.</p>
<p>164 LOTS BOUNDED BY W. JEFFERSON, W. OXFORD, PHILADELPHIA</p>	<p>This block is where the Bell Telephone company was, there could have been a lot of hazardous waste created from the manufacturing of telephones and landlines.</p>
<p>1803-13, 1817-41, &amp; 1847-61 N. 8TH ST. PHILADELPHIA</p>	<p>These 3 addresses were commercial businesses nestled among single use dwellings. These business may have created contamination or hazardous waste products.</p>
<p>2332 CARPENTER STREET PHILADELPHIA</p>	<p>In 1895 this location was an empty lot next to the Electric Car Co., then in 1910 it was buildings next to the Phila Rail and Machine Co. In 1942 and 1962 this was a lot directly adjacent to the General Motors Sales and Services lot where there was a gas station and a garage with a gas station in it.</p>
<p>3760 M STREET PHILADELPHIA</p>	<p>In 1942 and 1962 this was labeled as the Artcraft Silk Hosiery Company which would have had a lot of chemicals involved.</p>

<p>201-09 E. INDIANA AVENUE PHILADELPHIA</p>	<p>In 1962 and 1942 this was the Frank Mertz Yarn Mill. This means there may have been dyes and chemicals involved with the making of these yarns that created hazardous waste and contamination.</p>
<p>6130-6150 LANCASTER AVE PHILADELPHIA</p>	<p>In 1942/62 this site was a parking lot meaning there could have been an oil or other car product spillage that would have contaminated the land.</p>
<p>MOUNT VERNON STREET &amp; RIDGE AVENUE PHILADELPHIA</p>	<p>This street intersection has the PTC Power House Emergency Station, which created hazardous waste. Also at this intersection across the street there is a drive in gas station. The other surrounding sites on the intersection are commercial properties with dwellings, meaning these sites may also have contributed to some of the contamination on the land.</p>
<p>4055-89 MARKET STREET PHILADELPHIA</p>	<p>These lots were locations of a parking lot, commercial buildings and a laundromat in 1942/62. Parking lots can have hazardous spills, the commercial buildings may be creating hazardous waste, and laundromats use bleach and other chemicals that contaminate the land.</p> 
<p>2510 MORRIS STREET PHILADELPHIA</p>	<p>This property is right along the railroad and in 1942/62 it was a coal yard and gas station, meaning this land has had its fair share of hazardous waste on it.</p>
<p>4634-36, 4638-40, 4642-44, AND 4646 PARRISH ST. PHILADELPHIA</p>	<p>In 1942/62 these sites are labeled as industrial use, which can create hazardous waste; a garage, which generally contaminates the land, and a single use detached dwelling that may have created contamination when the house was removed.</p>

<p>4401 CASTOR AVE. PHILADELPHIA</p>	<p>This site used to be a drive in gas station, which could have easily contaminate the land. Now it's a house, with a neighborhood around it.</p>
<p>149 W SUSQUEHANNA AVE PHILADELPHIA</p>	<p>This property is a commercial dwelling meaning there may have been some type of contamination or hazardous waste such as a heating oil spill that occurred here.</p>
<p>2030-2036 NORTH 16TH STREET PHILADELPHIA</p>	<p>These lots are designated as a garage with a curb discharge gas station on the 1942/62 map.</p>
<p>NW CORNER 26TH &amp; SUSQUEHANNA, THRU TO 27TH &amp; FLETCHER PHILADELPHIA</p>	<p>This whole block is currently just a vacant plot of land. This could be due to the fact that on the 1942/62 map there are at least 5 garages and gas stations in this area.</p>
<p>2600 W Allegheny Ave Philadelphia, PA 19132</p>	<p>This is currently the SEPTA Allegheny Depot. In 1942/62 this was owned by Phila Transport as it was a car barn from the trolley/train cars.</p>
<p>NE SIDE OF 61ST ST- 324' SE FROM EASTWICK AVENUE PHILADELPHIA</p>	<p>This location is heavily industrialized right along the Schuylkill River. On the 1962 map there are a few vacant lots in this area probably as dumping sites for the Atlantic Refining Company, there are also areas that are labeled as industrial storage tanks, there is a small garage and a small junk shop, there is also an Oil Co. Inc, and a United States Gypsum Co., along with the Phila Gas Works Co. All of this is surrounded by railroads.</p>





<p>65 W PENN ST PHILADELPHIA</p>	<p>This location is labeled as an industrial site next to a gas station with curb discharge in the 1962 map</p>
<p>2238-2245 LATONA STREET PHILADELPHIA</p>	<p>This location seems to have always been single use dwellings there may have been an issue when reconstructing the houses or maybe there was an issue with the properties.</p>
<p>1939 WEST VENANGO STREET PHILADELPHIA</p>	<p>This location was a yeast manufacturing company owned by Standard Brands Inc.</p>
<p>4411R WAYNE AVE PHILADELPHIA</p>	<p>This is an address located directly underneath the Roosevelt Exp. Meaning there may have been a spill that occurred during construction creating a brownfield site.</p>
<p>550-582 N 9TH ST</p>	<p>These lots are right along the railroad at the Spring Garden St</p>



PHILADELPHIA	RR Station. On these lots there are a few that are simply commercial use, then there is a gas station, a lot simply labeled as industrial use, and then a commercial use dwelling. Any/all of these locations would have created a contamination to the land to label it as a brownfield site.
6316-6336 PASCHALL AVENUE PHILADELPHIA	These locations are of garages with gas stations.
EASTWICK INDUSTRIAL PARK STAGE A, EAST AND WEST PHILADELPHIA	This whole area is still currently an industrial park and it was one in the 1942/62 map as well. There are vacant lots for dumping, laundry facilities, manufacturing companies for cotton and other materials, junk yards, petroleum corps, and the railroad all in this area. This leads to a lot of land contamination meaning this area should remain a brownfield.

List of Brownfield sites:

<https://www3.epa.gov/myenv/MyMap.html?minx=-75.19421&miny=39.95554&maxx=-75.00366&maxy=40.02262&ve=12,39.98889,-75.10494&cLat=&cLon=&pSearch=19134,%20PA&players=>

Historical Map: <https://www.philageohistory.org/tiles/viewer/>

Philadelphia Architects and Buildings :<https://www.philadelphiabuildings.org/pab/index.cfm>

- Slightly hard to use, but if you can find an address on here through google then its useful (just hard to search up on the actual website)

**Laundromats and other laundry facilities** were not always environmentally friendly, causing land contamination, which is why they are labeled as brownfields.

- A chemical that is commonly used in laundry and drycleaning facilities is perchloroethylene, this chemical can be very dangerous and it was heavily used in the 1950s/60s. [Philadelphia](#) is trying to ban the use of it due to environmental hazards. There are now more [standards](#) set in place when dealing with PERC.
- There are ways to make a [profit](#) from these contaminated sites though, by cleaning up the property for future use

**Leather working/ Tanneries** create a lot of hazardous waste which is why they are often labeled as brownfields.

- Some [chemicals](#) involved in the leather process are: calcium hydroxide, ammonium salt, sulfuric acid, sodium bicarbonate, liginosulfonate, chromium sulfate, dyes that are aniline-based compounds, urethane. There are many acidic chemicals involved in this process
- [Risks](#): arsenic, lead, antimony, chromium, manganese, mercury, other heavy metals and chemicals in the soil.